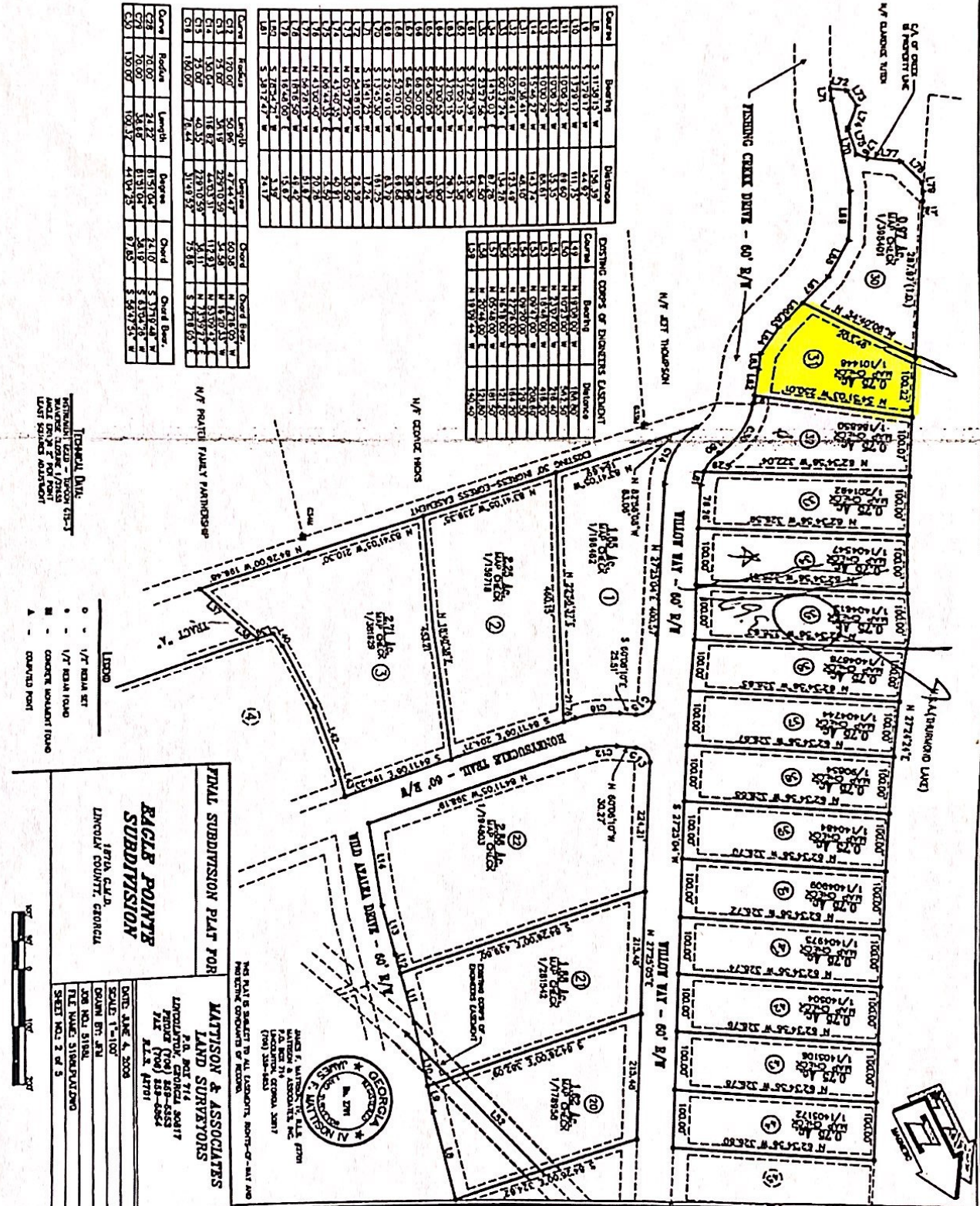


Curve	Bearing	Distance	Curve	Bearing	Distance
L1	S 11°04'15" W	154.93	L1	N 11°15'00" W	111.15
L2	S 13°29'17" W	44.87	L2	N 11°15'00" W	111.15
L3	S 12°59'31" W	15.57	L3	N 11°15'00" W	111.15
L4	S 10°00'28" W	65.81	L4	N 11°15'00" W	111.15
L5	S 15°46'27" W	143.72	L5	N 11°15'00" W	111.15
L6	S 10°36'41" W	44.07	L6	N 11°15'00" W	111.15
L7	S 07°28'41" W	173.48	L7	N 11°15'00" W	111.15
L8	S 03°17'52" E	64.50	L8	N 11°15'00" W	111.15
L9	S 23°27'52" E	15.30	L9	N 11°15'00" W	111.15
L10	S 31°29'53" W	41.56	L10	N 11°15'00" W	111.15
L11	S 11°04'15" W	154.93	L11	N 11°15'00" W	111.15
L12	S 13°29'17" W	44.87	L12	N 11°15'00" W	111.15
L13	S 12°59'31" W	15.57	L13	N 11°15'00" W	111.15
L14	S 10°00'28" W	65.81	L14	N 11°15'00" W	111.15
L15	S 15°46'27" W	143.72	L15	N 11°15'00" W	111.15
L16	S 10°36'41" W	44.07	L16	N 11°15'00" W	111.15
L17	S 07°28'41" W	173.48	L17	N 11°15'00" W	111.15
L18	S 03°17'52" E	64.50	L18	N 11°15'00" W	111.15
L19	S 23°27'52" E	15.30	L19	N 11°15'00" W	111.15
L20	S 31°29'53" W	41.56	L20	N 11°15'00" W	111.15
L21	S 11°04'15" W	154.93	L21	N 11°15'00" W	111.15

Curve	Bearing	Distance	Curve	Bearing	Distance
L1	N 11°15'00" W	111.15	L1	N 11°15'00" W	111.15
L2	N 11°15'00" W	111.15	L2	N 11°15'00" W	111.15
L3	N 11°15'00" W	111.15	L3	N 11°15'00" W	111.15
L4	N 11°15'00" W	111.15	L4	N 11°15'00" W	111.15
L5	N 11°15'00" W	111.15	L5	N 11°15'00" W	111.15
L6	N 11°15'00" W	111.15	L6	N 11°15'00" W	111.15
L7	N 11°15'00" W	111.15	L7	N 11°15'00" W	111.15
L8	N 11°15'00" W	111.15	L8	N 11°15'00" W	111.15
L9	N 11°15'00" W	111.15	L9	N 11°15'00" W	111.15
L10	N 11°15'00" W	111.15	L10	N 11°15'00" W	111.15
L11	N 11°15'00" W	111.15	L11	N 11°15'00" W	111.15
L12	N 11°15'00" W	111.15	L12	N 11°15'00" W	111.15
L13	N 11°15'00" W	111.15	L13	N 11°15'00" W	111.15
L14	N 11°15'00" W	111.15	L14	N 11°15'00" W	111.15
L15	N 11°15'00" W	111.15	L15	N 11°15'00" W	111.15
L16	N 11°15'00" W	111.15	L16	N 11°15'00" W	111.15
L17	N 11°15'00" W	111.15	L17	N 11°15'00" W	111.15
L18	N 11°15'00" W	111.15	L18	N 11°15'00" W	111.15
L19	N 11°15'00" W	111.15	L19	N 11°15'00" W	111.15
L20	N 11°15'00" W	111.15	L20	N 11°15'00" W	111.15
L21	N 11°15'00" W	111.15	L21	N 11°15'00" W	111.15

Curve	Bearing	Distance	Curve	Bearing	Distance
C1	N 82°41'05" W	239.25	C1	N 82°41'05" W	239.25
C2	N 82°41'05" W	210.20	C2	N 82°41'05" W	210.20
C3	N 82°41'05" W	198.46	C3	N 82°41'05" W	198.46
C4	N 82°41'05" W	186.72	C4	N 82°41'05" W	186.72
C5	N 82°41'05" W	174.98	C5	N 82°41'05" W	174.98
C6	N 82°41'05" W	163.24	C6	N 82°41'05" W	163.24
C7	N 82°41'05" W	151.50	C7	N 82°41'05" W	151.50
C8	N 82°41'05" W	139.76	C8	N 82°41'05" W	139.76
C9	N 82°41'05" W	128.02	C9	N 82°41'05" W	128.02
C10	N 82°41'05" W	116.28	C10	N 82°41'05" W	116.28
C11	N 82°41'05" W	104.54	C11	N 82°41'05" W	104.54
C12	N 82°41'05" W	92.80	C12	N 82°41'05" W	92.80
C13	N 82°41'05" W	81.06	C13	N 82°41'05" W	81.06
C14	N 82°41'05" W	69.32	C14	N 82°41'05" W	69.32
C15	N 82°41'05" W	57.58	C15	N 82°41'05" W	57.58
C16	N 82°41'05" W	45.84	C16	N 82°41'05" W	45.84
C17	N 82°41'05" W	34.10	C17	N 82°41'05" W	34.10
C18	N 82°41'05" W	22.36	C18	N 82°41'05" W	22.36
C19	N 82°41'05" W	10.62	C19	N 82°41'05" W	10.62
C20	N 82°41'05" W	0.00	C20	N 82°41'05" W	0.00



EAGLE POINTE SUBDIVISION
 1870A S.W.D.
 LINCOLN COUNTY, GEORGIA

FINAL SUBDIVISION PLAN FOR
MATTISON & ASSOCIATES
 LAND SURVEYORS

P.O. BOX 714
 LINCOLN COUNTY, GEORGIA 30417
 PHONE (706) 858-4533
 FAX (706) 858-4544
 ALEX. FETTER

DATE: JUNE 4, 2008
 SCALE: 1"=100'
 DRAWN BY: JFM
 JOB NO.: 018
 TITLE: EAGLE POINTE SUBDIVISION
 SHEET NO. 2 OF 5

THIS PLAN IS SUBJECT TO ALL EASEMENTS, RIGHTS-OF-WAY AND EXISTING CONDITIONS OF RECORD.

TECHNICAL DATA:
 PREPARED BY: JFM
 CHECKED BY: JFM
 DATE: 6/4/08

○ - 1/4" NEAR SET
 ○ - 1/4" NEAR ROAD
 ■ - CONCRETE WALKWAY (1000)
 ▲ - CONCRETE POLE